



PRODUCT CATALOG

Accessories SATO Printers 2016

Label Unwinder-UW series.

Label Rewinder-RW series

Back Paper Rewinder-RW-B series

Un/Rewinder-URW series

Unwinder/Back Paper Rewinder-URW-B series

Dispenser units-DF series

Options:

(*) Mark.

These models can be connected together with the printer with a cable for “Power” and “Start/Stop”.

Please state in those cases: “Signal Cable”, when order.

(Then the unit will be delivered with 24VDC motor and a “Signal Cable”, without “Power Supply” and “Tension Arm” for “Start/Stop”.)

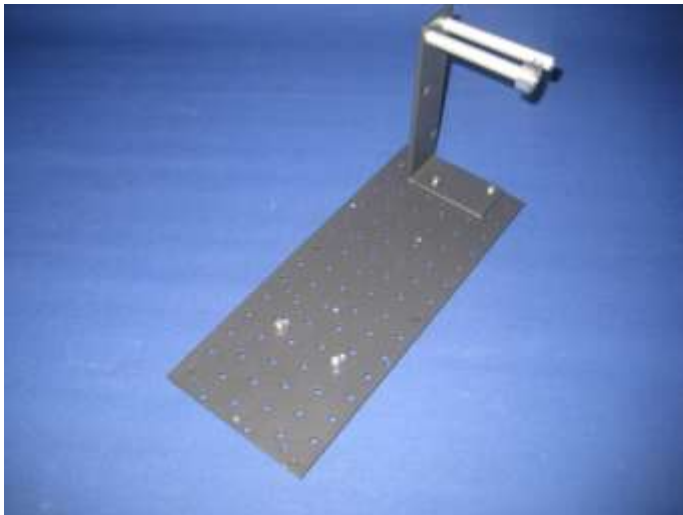
The manufacturer reserves the right to change specifications without prior notice.

Internet: <http://www.nasab.com>

E-mail: sales@nasab.com

**Label Unwinder, (UW-4S, UW-5S, W=125/180mm, D=260mm)
Label Unwinder, (UW-4L, UW-5L, W=125/180mm, D=360mm)**

Base Model



Base model UW-4S, UW-5S



Base model UW-4L, UW-5L

Technical Specification Base Models:

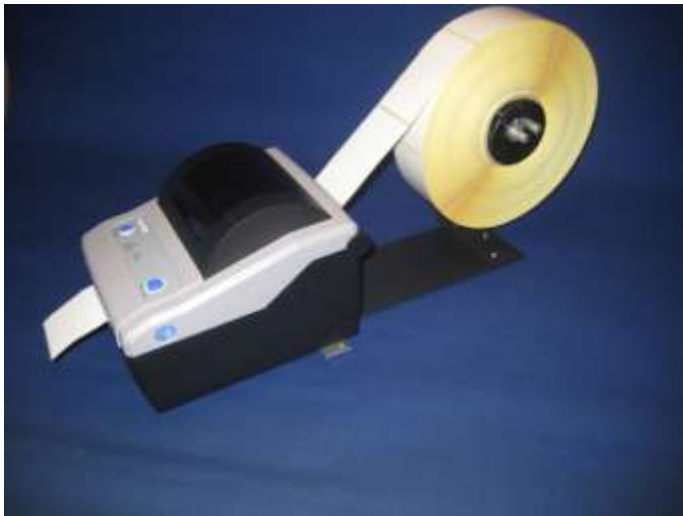
This is a "Universal Stand Alone Base Model" which can be used together with any Printer.
No adapter for connecting the printer together with the Unwinder unit is supplied.

Shaft length:	125/180mm
Label roll size, diameter:	12- 240/360mm
Weight (net):	0,8 kg/1,5kg
Label/Tag thickness:	80 g/m ²
Length:	200/250mm
Width:	170/250mm
Height:	185/230mm

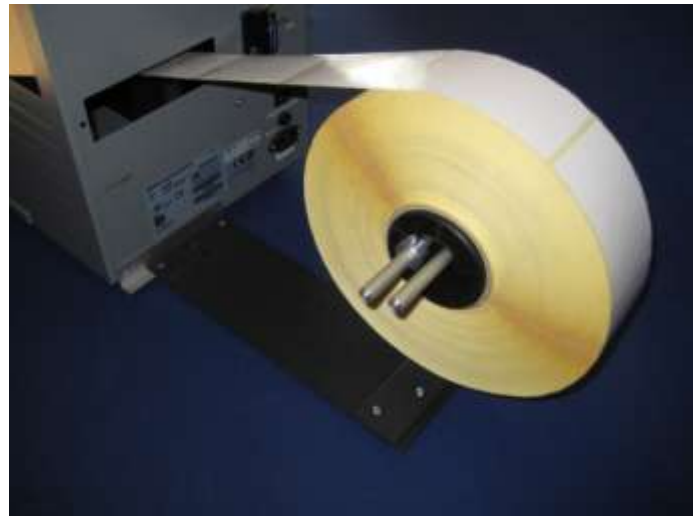


UW-2S with Sato TH2 printer

Label Unwinder UW2S, 4S, 5S & 6S



UW-5S with CG4 printer



UW-5S with CL408 printer

Art. No.	UW-S model
	Unwinder Unit SATO specific Printers
	Label width 50mm(2"), Roll diameter 260mm
104-20-00	UW2S, Unwinder unit, Sato CG-2xx
104-20-05	UW2S, Unwinder unit, Sato TH-2xx
104-20-06	UW2SK, Unwinder unit, Sato TH-2SK
	Label width 130mm(4"), Roll diameter 260mm
104-20-01	UW5S, Unwinder unit, Sato CL-408e, CL-412e, LM-408e
104-20-03	UW5S, Unwinder unit, Sato CG-4
104-20-04	UW5S, Unwinder unit, Sato CT-408i, CT-412i, CT-424i
104-20-07	UW5S, Unwinder unit, Sato GL-408e
	Label width 180mm(6"), Roll diameter 260mm
106-20-01	UW6S, Unwinder unit, Sato CL-608e, CL-612e

Technical Specification Unwinder Unit UW-2S, 5S & 6S:

Shaft length:	65mm(2S), 145mm(5S), 180mm(6S)
Label roll size, diameter:	12-260mm, (38mm paper Core)
Weight (net):	0,8 kg
Label/Tag thickness:	80 g/m ²
Length:	250mm
Width:	120mm(2S), 170mm(5S), 250mm(6S)
Height:	180mm

Label Unwinder (Heavy Duty) UW2L, 4L, 5L & 6L



UW-5L with CG4 printer



UW-5L with CL408 printer

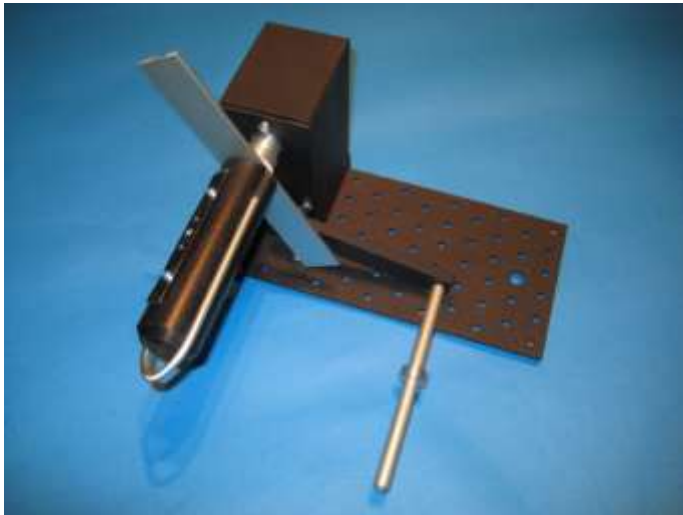
Note: All Unwinders in the UW-L series can be adjusted sideways, (left/right)

Art. No.	UW-L model
	Unwinder Unit SATO specific Printers
	Label width 50mm(2"), Roll diameter 360mm
104-40-00	UW2L, Unwinder unit, Sato CG-2
	Label width 130mm(4"), Roll diameter 360mm
104-40-01	UW5L, Unwinder unit, Sato CL-408e, CL-412e, LM-408e
104-40-03	UW5L, Unwinder unit, Sato CG-4
104-40-04	UW5L, Unwinder unit, Sato CT-408i, CT-412i, CT-424i
104-40-07	UW5L, Unwinder unit, Sato GL-408e
	Label width 180mm(6"), Roll diameter 360mm
106-40-01	UW6L, Unwinder unit, Sato CL-608e, CL-612e

Technical Specification Unwinder Unit UW-2L, 5L & 6L:

Bobbin length:	50mm(2L), 130mm(5L), 180mm(6L), (Available for 3" Adapter)
Label roll size, diameter:	40-360mm
Weight (net):	2,0 kg
Label/Tag thickness:	80 g/m ²
Length:	350mm
Width:	120mm(2L), 170mm(5L), 250mm(6L)
Height:	230mm

Label Rewinder, (RW-4S, 5S, W=130/180mm, D=210mm)
Label Rewinder, (RW-4L, 5L, W=130/180mm, D=360mm)
 (Universal Base model)



RW-S-LC



RW-L-LC

Technical Specification Base Model:

This is a "Stand Alone Base Model" which can be used together with any Printer.
 No adapter for connecting the printer together with the Rewinder unit is supplied.

Bobbin length:	130/180mm
Label roll size, diameter:	40-210/360mm
Weight (net):	1,5 kg/2,2kg
Label/Tag thickness:	80 g/m ²
Length:	200/250 mm
Width:	170/250mm
Height:	185/230mm

Note: Power supply included together with the Rewinder.

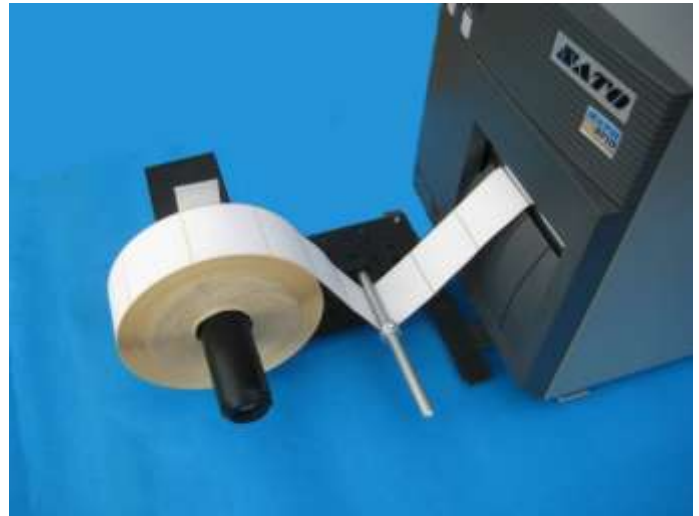


RW-S-LC with CT408i

Label Rewinder RW2S, 5S & 6S



RW-5S with CG4 printer



RW-5S with CL408 printer

Note: All Rewinders in the RW-S series can be adjusted sideways, (left/right)

Art. No.	RW-S Model
	Label width 50mm(2"), Roll diameter 210mm
104-21-00	RW2S, Rewinder unit, Sato CG-2
	Label width 130mm(4"), Roll diameter 210mm
104-21-01	RW5S, Rewinder unit, Sato CL-408e(*), CL-412e(*), LM-408e
104-21-03	RW5S, Rewinder unit, Sato CG-4
104-21-04	RW5S, Rewinder unit, Sato CT- CT-408i, CT-412i, CT-424i
104-21-07	RW5S, Rewinder unit, Sato GL-408e
	Label width 180mm(6"), Roll diameter 210mm
106-21-01	RW6S, Rewinder unit, Sato CL-608e(*), CL612e(*)
	Note: Power supply included together with the Rewinder.
95-50-13	Power Supply 12V DC, 1,0A
(*)(24VDC Motor)	Can be connected with signal cable from printer for 24VDC and Start/Stop.

Technical Specification Rewinder Unit RW2S, 5S & 6S:

Bobbin length:	50mm(2S), 130mm(5S), 180mm(6S), (Available for 3" Adapter)
Label roll size, diameter:	40-210mm
Weight (net):	1,5 kg
Label/Tag thickness:	80 g/m ²
Length:	250 mm
Width:	120mm(2S), 170mm(5S), 250mm(6S)
Height:	185mm

Label Rewinder (Heavy Duty) RW2L, 5L & 6L



Base Model RW-5L

Note: All the Rewinders in the RW-L series can be adjusted sideways, (left/right)

Art. No.	RW-L Model
	Label width 50mm(2"), Roll diameter 360mm
104-41-00	RW2L, Rewinder unit, Sato CG-2
	Label width 130mm(4"), Roll diameter 360mm
104-41-01	RW5L, Rewinder unit, Sato CL-408e(*), CL-412e(*), LM-408e
104-41-03	RW5L, Rewinder unit, Sato CG-4
104-41-04	RW5L, Rewinder unit, Sato CT-408i, CT-412i, CT-424i
104-41-07	RW5L, Rewinder unit, Sato GL-408e
	Label width 180mm(6"), Roll diameter 360mm
106-41-01	RW6L, Rewinder unit, Sato CL-608e(*), CL612e(*)
	Note: Power supply included together with the Rewinder.
95-50-11	Power Supply 12V DC, 2,0A
(*)(24VDC Motor)	Can be connected with signal cable from printer for 24VDC and Start/Stop.

Technical Specification Rewinder Unit RW-2L, 5L & 6L:

Bobbin length:	50mm(2L), 130mm(5L), 180mm(6L), (Available for 3" Adapter)
Label roll size, diameter:	40-360mm
Weight (net):	2,2 kg
Label/Tag thickness:	80 g/m ²
Length:	250mm
Width:	120mm(2L), 170mm(5L), 250mm(6L)
Height:	230mm

Back Paper Rewinder B-model, RW2-B, RW5-B & RW6-B



Picture shows RW-B for CL-408

Art. No.	Back Paper Rewinder, RW-B Model(Rewinder behind Printer)
	Label width 50mm(2"), Roll diameter 130mm
104-23-00	RW2-B, Rewinder unit, Sato CG-2
	Label width 130mm(4"), Roll diameter 130mm
104-23-01	RW5-B, Rewinder unit, Sato CL-408e(*), CL-412e(*), LM-408e
104-23-02	RW5-B, Rewinder unit, Sato M84pro(*)
104-23-03	RW5-B, Rewinder unit, Sato CG-4
104-23-04	RW5-B, Rewinder unit, Sato CT-408i, CT-412i, CT-424i
104-23-07	RW5-B, Rewinder unit, Sato GL-408e
	Label width 180mm(6"), Roll diameter 130mm
106-23-01	RW6-B, Rewinder unit, Sato CL-608(*), CL612(*)
	Note: Power supply included together with the Rewinder.
95-50-13	Power Supply 12V DC, 1,0A
(*)(24V DC Motor)	Can be connected with signal cable from printer for 24VDC and Start/Stop.

Technical Specification Rewinder Unit RW2-B, 5-B & 6-B:

Bobbin length:	50mm(2S), 130mm(5S), 180mm(6S), (Available for 3" Adapter)
Label roll size, diameter:	40-210mm
Weight (net):	1,5 kg
Label/Tag thickness:	80 g/m ²
Length:	185, (250 mm, depending on model) + Length of Printer
Width:	120mm(2S), 170mm(5S), 250mm(6S)
Height:	185mm

Label Un/Rewinder URW2S, 5S & 6S



URW-5S with CG4 printer



URW-5S with CT408 printer

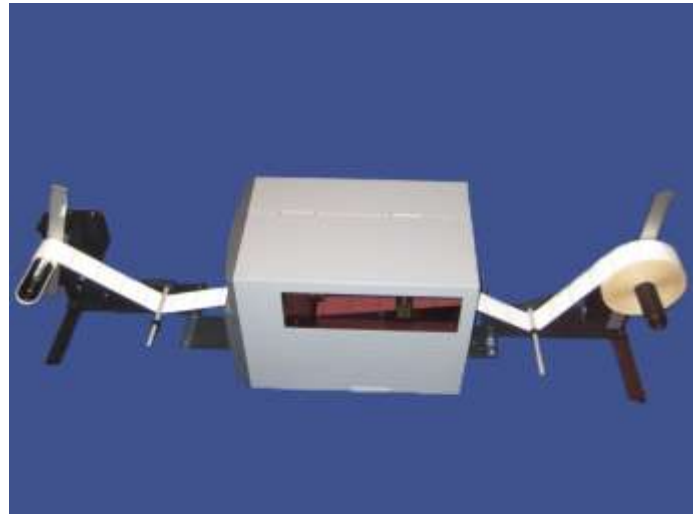
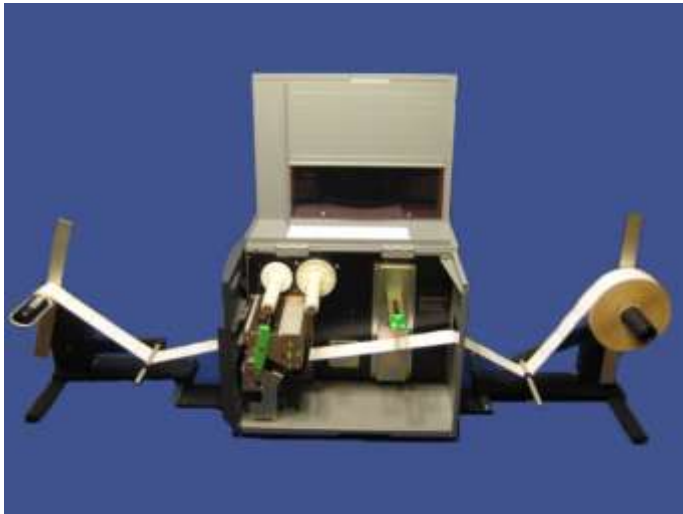
Note: Only the Rewinder unit in the URW-S series can be adjusted sideways, (left/right)

Art. No.	Unwinder/Rewinder Unit(URW)
	URW-S model (Rewinder in front, Unwinder behind printer)
	Label width 50mm(2"), Roll diameter RW-210/UW-260mm
104-22-00	URW2S, Un/Rewinder unit, Sato CG-2
	Label width 130mm(4"), Roll diameter RW-210/UW-260mm
104-22-01	URW5S, Un/Rewinder unit, Sato CL-408e(*), CL-412e(*), LM-408e
104-22-03	URW5S, Un/Rewinder unit, Sato CG-4
104-22-04	URW5S, Un/Rewinder unit, Sato CT-408i, CT-412i, CT-424i
104-22-07	URW5S, Un/Rewinder unit, Sato GL-408e
	Label width 180mm(6"), Roll diameter RW-210/UW-260mm
106-22-01	URW6S, Un/Rewinder unit, Sato CL-608e(*), CL-612e(*)
	Note: Power supply included together with the Un/Rewinder.
95-50-13	Power Supply 12V DC, 1,0A
(*)(24VDC Motor)	Can be connected with signal cable from printer for 24VDC and Start/Stop.

Technical Specification Unwinder/Rewinder Unit URW2S, 5S & 6S:

	Unwinder unit	Rewinder unit
Bobbin length:	65mm(2S), 145mm(5S), 195mm(6S)	50mm(2S), 130mm(5S), 180mm(6S),
Label roll size, diameter:	12-260mm	40-210mm
Weight (net):	3,2 kg	
Label/Tag thickness:	80 g/m ²	
Length:	450mm + length of printer	
Width:	120mm(2S), 170mm(5S), 250mm(6S)	120mm(2S), 170mm(5S), 250mm(6S)
Height:	185mm	185mm

Label Un/Rewinder (Heavy Duty) URW2L, 5L & 6L



URW5L with CL408 Printer

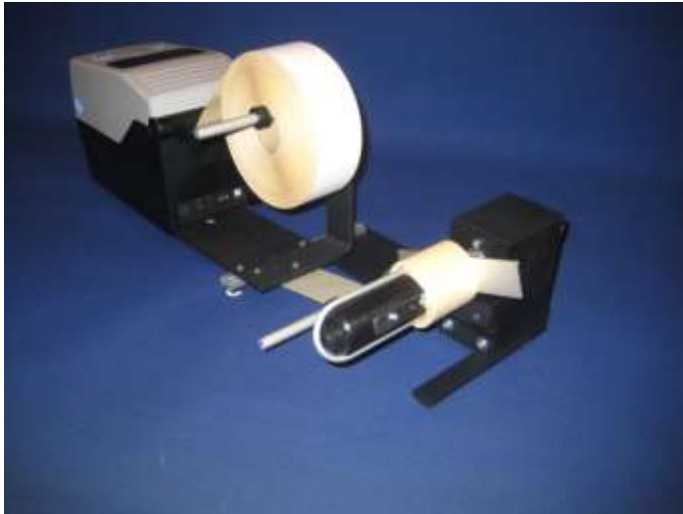
Note: Both the Unwinder and the Rewinder in the URW-L series can be adjusted sideways, (left/right)

Unwinder/Rewinder Unit(URW)	
URW-L model(Rewinder in front, Unwinder behind printer)	
Art. No.	Label width 50mm(2"), Roll diameter RW-360/UW-360mm
104-42-00	URW2L, Un/Rewinder unit, Sato CG-2
Label width 130mm(4"), Roll diameter RW-360/UW-360mm	
104-42-01	URW5L, Un/Rewinder unit, Sato CL-408e(*), CL-412e(*), LM-408e
104-42-03	URW5L, Un/Rewinder unit, Sato CG-4
104-42-04	URW5L, Un/Rewinder unit, Sato CT-408i, CT-412i, CT-424i
104-42-07	URW5L, Un/Rewinder unit, Sato GL-408e
Label width 180mm(6"), Roll diameter RW-360/UW-360mm	
106-42-01	URW6L, Un/Rewinder unit, Sato CL-608e(*), CL-612e(*)
Note: Power supply included together with the Un/Rewinder.	
95-50-11	Power Supply 12V DC, 2,0A
(*) (24VDC Motor) Can be connected with signal cable from printer for 24VDC and Start/Stop.	

Technical Specification Unwinder/Rewinder Unit URW2L, 5L & 6L:

	Unwinder unit	Rewinder unit
Bobbin length:	50mm(2S), 130mm(5S), 180mm(6S),	50mm(2S), 130mm(5S), 180mm(6S),
Label roll size, diameter:	40-360mm	40-360mm
Weight (net):	1,5 kg	
Label/Tag thickness:	80 g/m ²	
Length:	500mm + length of printer	
Width:	120mm(2S), 170mm(5S), 250mm(6S)	120mm(2S), 170mm(5S), 250mm(6S)
Height:	230mm	230mm

Label Unwinder/Back Paper Rewinder URW2-B, 5-B & 6-B



Picture shows RW-B for CG-2 Printer



Picture shows RW-B for CG-4 Printer

Art. No.	Unwinder/Back Paper Rewinder Unit
	URW-B model(Unwinder/Rewinder behind Printer)
	Label width 50mm(2"), Roll diameter UW-260/RW-130mm
104-24-00	URW2-B, Un/Rewinder unit, Sato CG-2
	Label width 130mm(4"), Roll diameter UW-260/RW-130mm
104-24-01	URW5-B, Un/Rewinder unit, Sato CL-408e(*), CL-412e(*), LM-408e
104-24-03	URW5-B, Un/Rewinder unit, Sato CG-4
104-24-04	URW5-B, Un/Rewinder unit, Sato CT-408i, CT-412i, CT-424i
104-24-07	URW5-B, Un/Rewinder unit, Sato GL-408e
	Label width 180mm(6"), Roll diameter UW-260/RW-130mm
106-24-01	URW6-B, Un/Rewinder unit, Sato CL-608e(*), CL-612e(*)
	Note: Power supply included together with the Un/Rewinder.
95-50-13	Power Supply 12V DC, 1,0A
(*)	(24VDC Motor) Can be connected with signal cable from printer for 24VDC and Start/Stop.

Technical Specification Unwinder/Rewinder Unit URW2-B, 5-B & 6-B:

	Unwinder unit	Rewinder unit
Bobbin length:	65mm(2S), 145mm(5S), 195mm(6S)	50mm(2S), 130mm(5S), 180mm(6S),
Label roll size, diameter:	12-260mm	40-210mm
Weight (net):	3,2 kg	
Label/Tag thickness:	80 g/m ²	
Length:	400mm + Length of printer	
Width:	120mm(2S), 170mm(5S), 250mm(6S)	120mm(2S), 170mm(5S), 250mm(6S)
Height:	185mm	185mm

Label Dispenser unit for Printer



DF4 labeling bread at a bakery in Sweden

External Dispenser (DF), for connection together with any RFID printer.
 The dispenser is designed for applying the labels automatically on the product
 “On Line” together with a printer.
 The dispenser is adjustable up/down and in/out to match the different label sizes.

NOTE: All dispenser units are delivered without Floor Stand.
For further information pls. Contact info@nasab.com

Art. No.	Label Dispenser Unit for SATO Printer Label width 125mm
105-04-01	DF4E, Dispenser unit 4" with Electronic for external start
105-04-02	DF4, Dispenser unit 4"
105-04-03	DF4XE, Dispenser unit 4" with Electronic for external start. External Label Roll
105-04-04	DF4X, Dispenser unit 4". External Label Roll
105-04-05	DF4FE, Dispenser unit 4" Printer with Electronic for external start. Label Fan folded
105-04-06	DF4F, Dispenser unit 4" Printer. Label Fan folded

The manufacturer reserves the right to change specifications without prior notice.