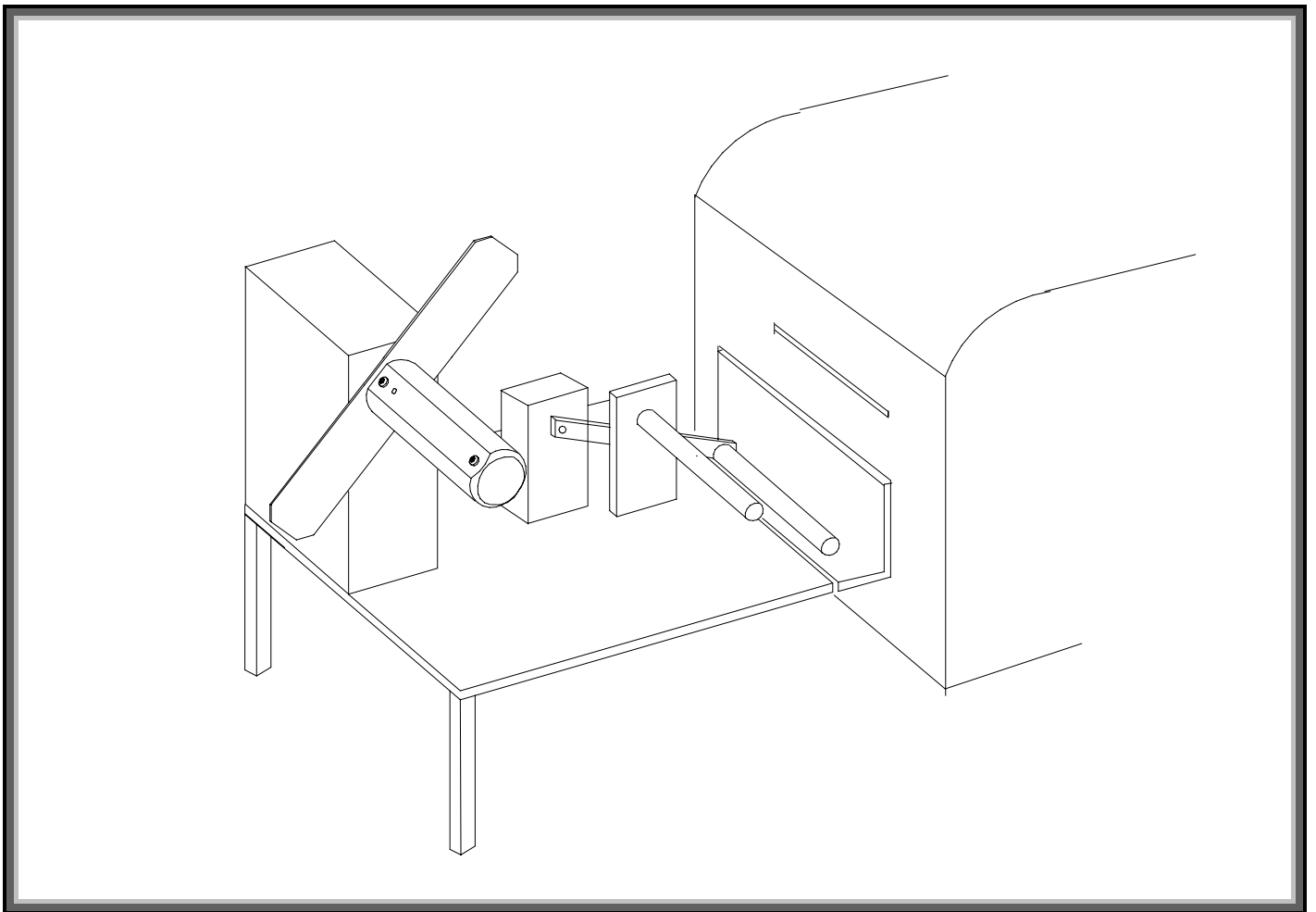


Nasab

External Rewinder

RW-901

Art. No. 95-50-20.



Service Manual.

Edition 1

January 1998 - Art. No. 10-50-20

INTRODUCTION

1. Introduction
2. Connection
3. Adjustment
4. Printing & Rewinding
5. Hints
6. Specification
7. Spares
8. Options
9. Elschema

Note:

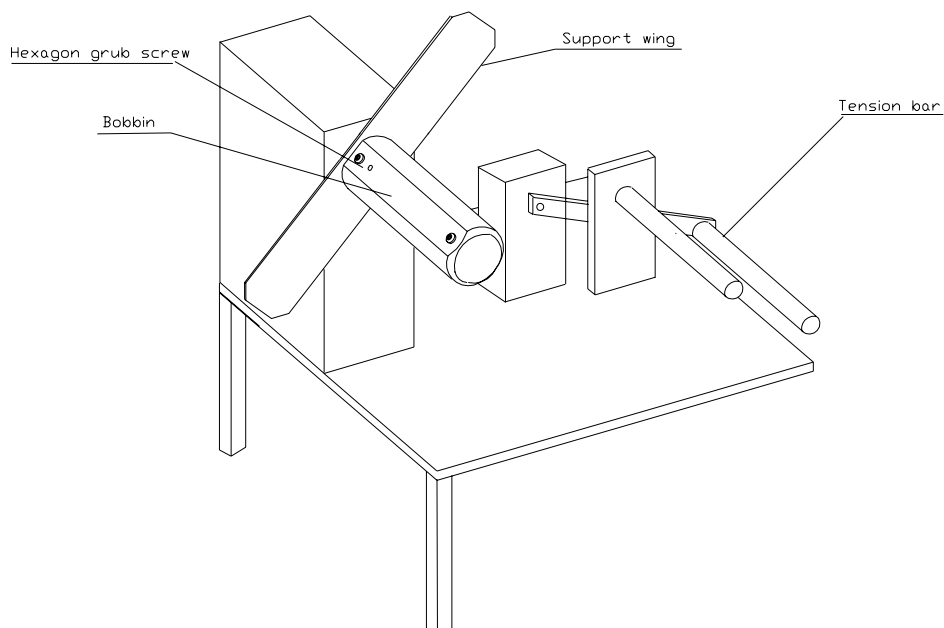
18V/AC adapter is normally ordered separately

Connection:

- Put the printer on a table with space for the rewinder to the left side of printer.
- Remove the existing screws in the cover on left side of printer.
- Fasten the L-Plate with the two new screws that are within the rewinder package.
- Fit the rewinder completely into the hinges.
- Connect the Adapter with the cable from the 18V/AC input plug on the rewinder control panel to the power mains socket.
- Let the ON/OFF switch stay in OFF position.

Adjustment:

- Load the paper stock and thread the paper web inside the printer.
- Make sure that the roll and the web are properly inserted.
- Switch on the printer and Feed out a length of 40cm of paper.
- Route the paper in the direction in figure 3.
- Insert if necessary Adapter for 76mm (3")bobbin.
- Tighten the screw so it not touching the metal plate on the bobbin.
- Use a full width paper core and insert it to the bobbin.
- Rewind manually a few turns so the paper is rewinded.



Note:

- The Bobbin has an adjustable plate. This plate can easily be moved by two screws so it fits the paper core.
- Move always the plate so it is aligned with the bobbin.
- If not a paper core is used there is enough space beneath the plate to insert the the web.
- Adapter for 76mm (3") bobbin has a plastic flap holding the paper core.

- Set and let the On/Off switch stay in On position(1).

- The rewinder will start rotating and will stop when the proper tension has been obtained.
- If the rewinder does not start rotating when the power is switched on, lift the tension bar to position 2, see figure 3.

In position 1 and 3, the rewinder is stopped. In position 2 and 4 it will rotate, but in opposite directions, depending on direction switch in figure 4.

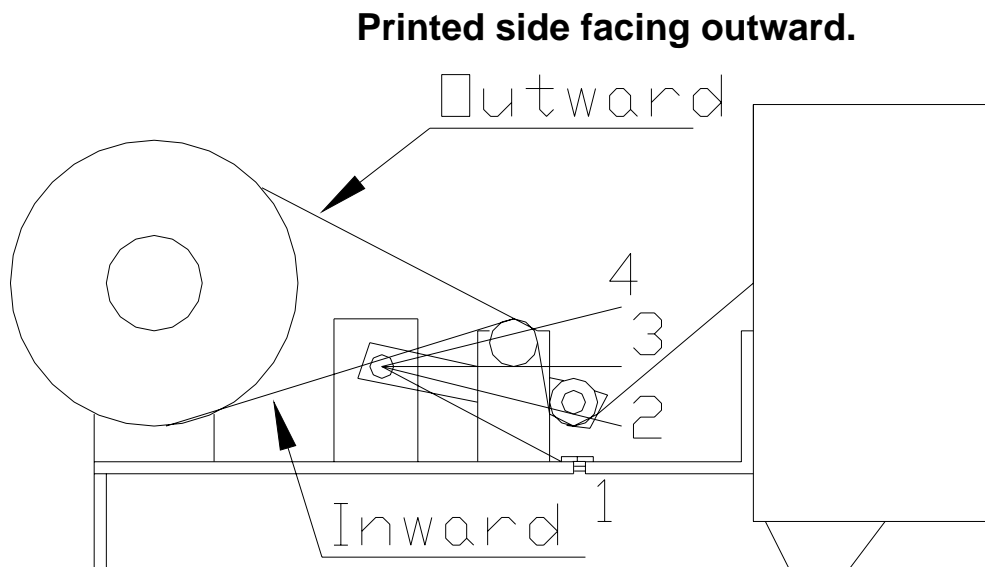


Figure 3

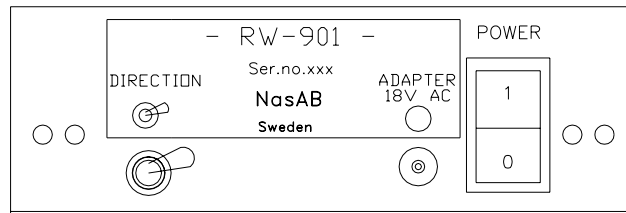


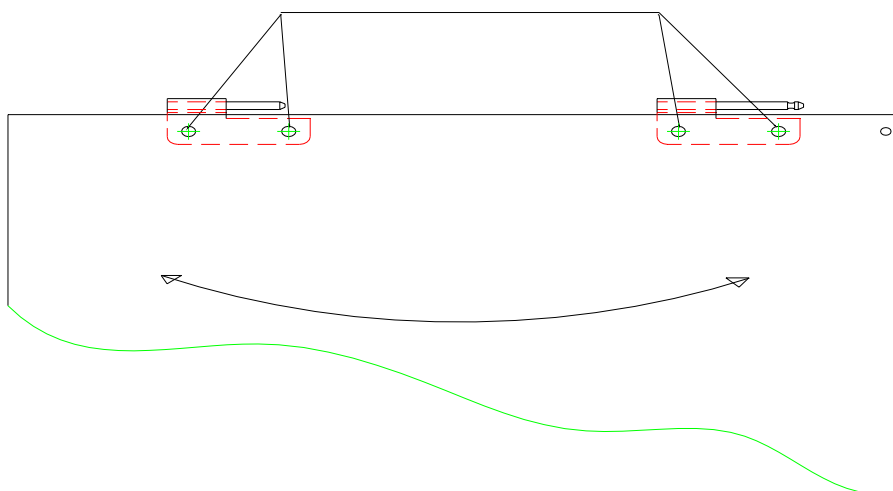
Figure 4.

- After the rewinding is finished, turn off the power, and remove the rewound roll.

Hints:

- If you get problem with the rewinded roll, e.g. the roll will not stay rewinded at one side try to adjust with the four adjustment screws by adjusting the whole rewriter plate so the left side of the stretched paper is flush to bobbin wing.
- Tighten the screws.

Adjustment Screws



Specification:

	Bobbin length,	125mm
	Label roll size,	38-205mm
	Bobbin paper core size,	38-42mm
Dimensions:		
	L	320mm
	W	250mm
	H	350mm
	Weight	3,6kg

Power:

Supply the Rewinder from separate adapter either 18V/DC 15W, 800mA or 24V DC.

(2 pole female chassi plug, length 12mm, outer 5,5mm, inner 2.1mm)

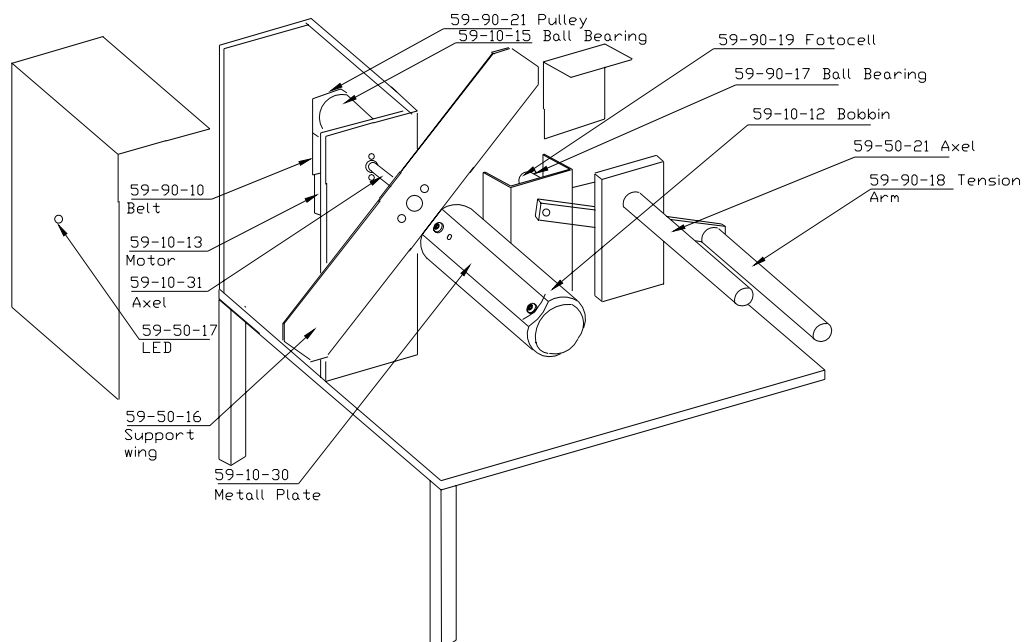
Powering from printer is not recommended.

Spares:

Motor assy	59-10-13
Tooth belt.	59-90-10
Bobbin	59-10-12
Ball Bearing	59-10-15
Support wing	59-50-16
Ball Bearing (tension arm)	59-30-17
Tension Arm	59-90-18
Fotocell	59-90-19
LED (in front)	59-50-17
Electronic PC-Board assy	59-90-20
Axel	59-50-21
Pulley	59-90-21
Metall Plate Bobbin	59-10-30

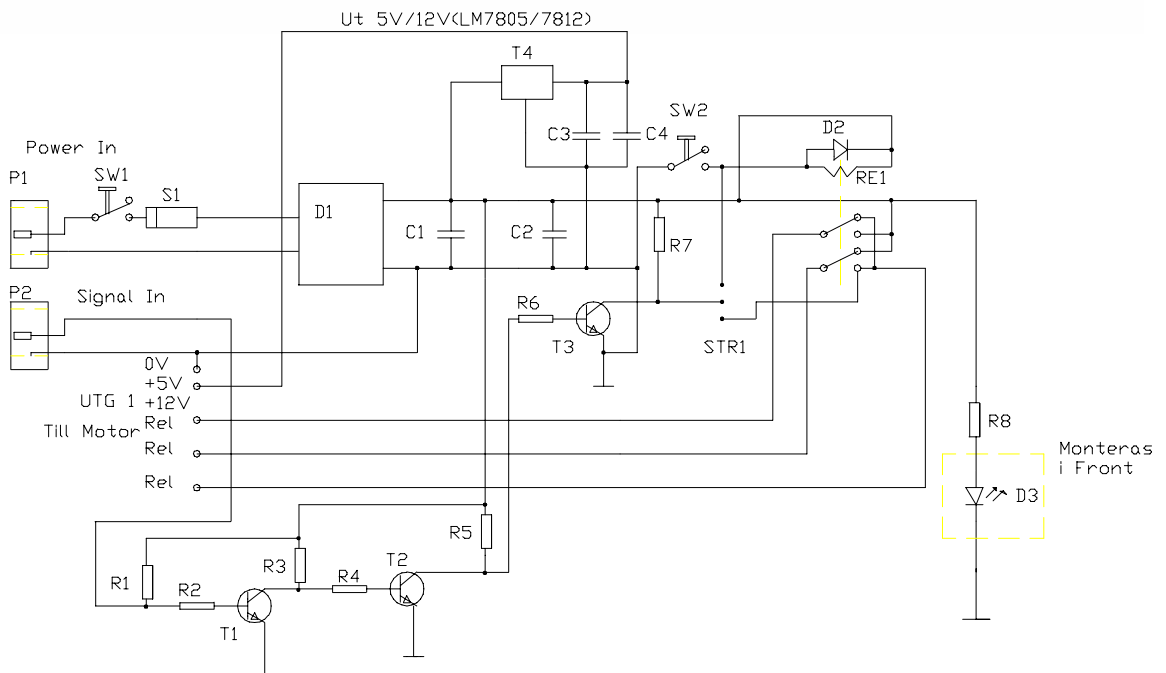
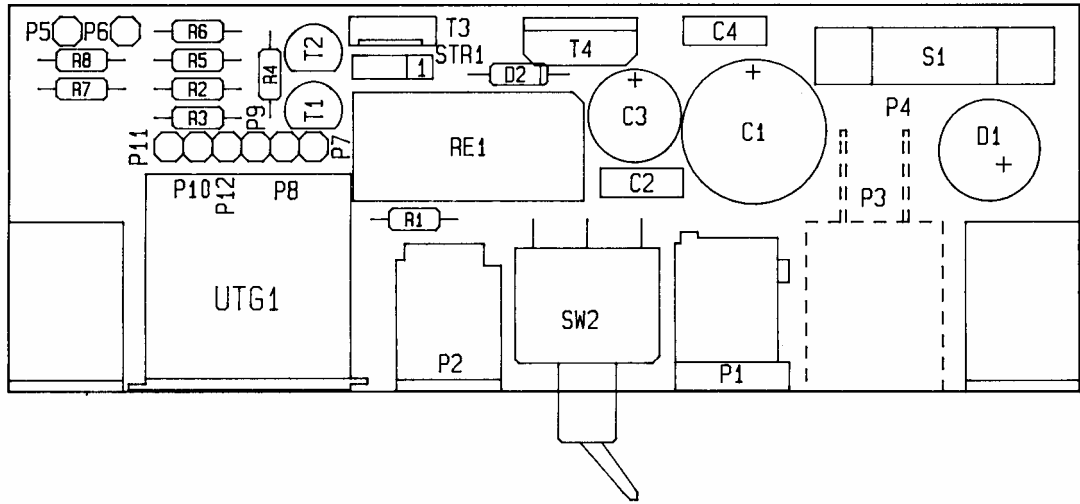
Options:

Adapter 76mm (3") bobbin	95-50-20
Optional support wing	95-50-16
Adapter 230V/18 15W	95-50-14



Elschema:

Layout



Nasab

Wichrowa 49
42 200 Czestochowa
Poland

Phone: +48(0)34 3654405
Fax: +48(0)34 3654489
Email: info@nasab.com