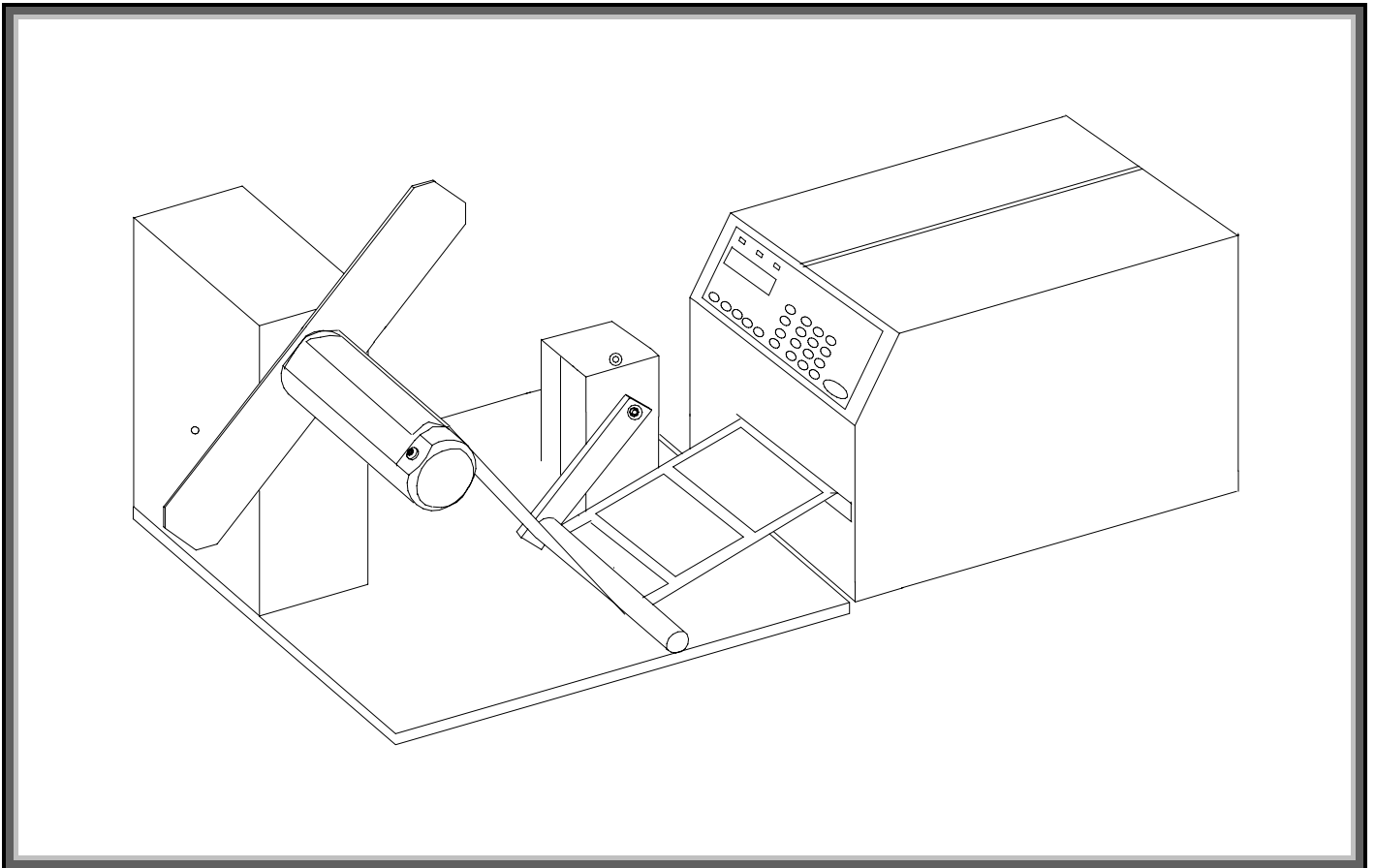


Nasab

External Rewinder

RW-601XP

Art. No. 95-50-32.



Service Manual.

Edition 1:1

December 1998 - Art. No. 10-60-32

INTRODUCTION

1. Introduction
2. Connection
3. Adjustment
4. Printing & Rewinding
5. Hints
6. Specification
7. Spares
8. Options
9. Elschema

Note:

18V/AC adapter is normally ordered separately

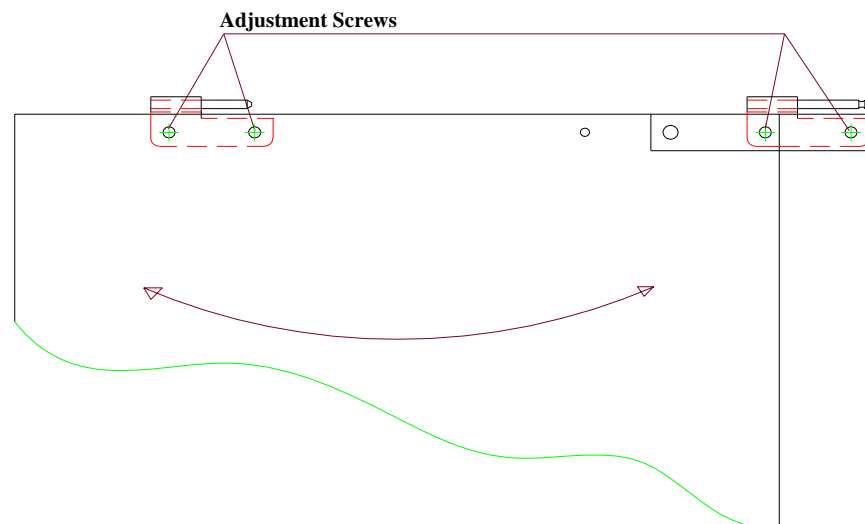
Connection:

- Put the printer on a table with enough space in front of it.
- Remove the existing front lid from hinges of the printer.
- Fit the rewriter completely into the hinges.
- Connect the Adapter with the cable from the 18V/AC input plug on the rewriter control panel to the power mains socket.
- Let the ON/OFF switch stay in OFF position.

Adjustment:

- Load the paper stock and thread the paper web inside the printer.
- Make sure that the roll and the web are properly inserted.
- Check carefully that it goes proper positioned along the paper edge guide or guide washers.
- Check the web is close to the inner guide just beneath the printhead.
- Lower the printhead.

- Switch on the printer and Feed out a length of 40cm of paper.
- Grip the paper in the middle and stretch it and lower it towards bobbin.
- By the four adjustment screws adjust the whole rewriter plate so the left side of the stretched paper is flush to bobbin wing.
- Tighten the screws.



- Insert if necessary Adapter for 76mm (3") bobbin.
- Tighten the screw so it not touching the metal plate on the bobbin.
- Use a full width paper core and insert it to the bobbin.
- Rewind manually a few turns so the paper is rewinded.

Note:

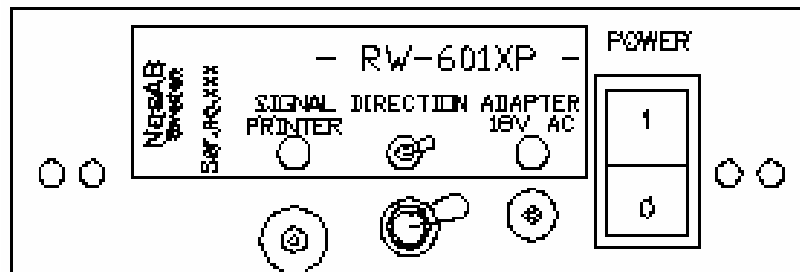
- The Bobbin has an adjustable plate. This plate can easily be moved by two screws so it fits the paper core.
- Move always the plate so it is aligned with the bobbin.
- If not a paper core is used there is enough space beneath the plate to insert the the web.
- Adapter for 76mm (3") bobbin has a plastic flap holding the paper core.

For your information there is no friction clutch inside the rewinder.

Therefore the rewinder should only be running with the tension arm in use. If not, damage to the Motor could accore.

Printing & Rewinding:

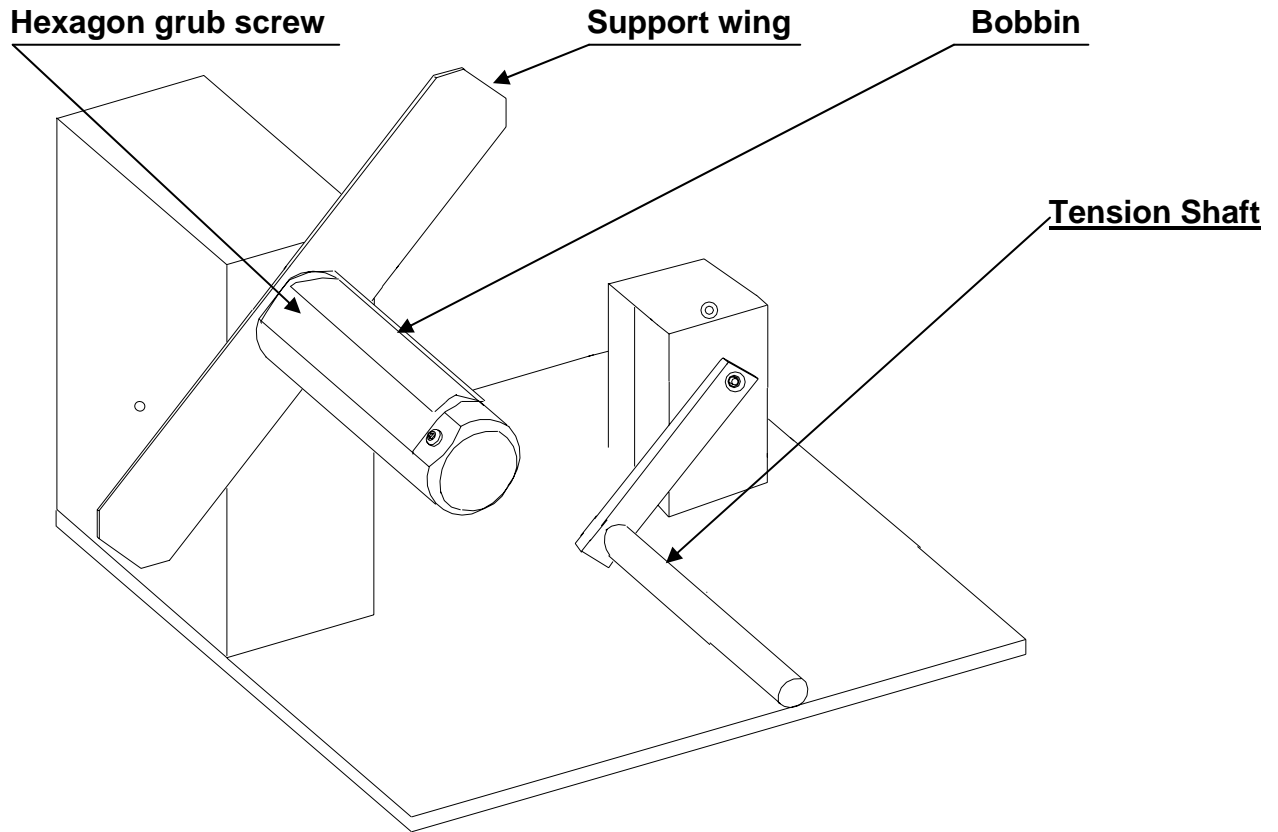
- Only for Rewinder models and Printers with this option.
- Connect the Signal cable from Cutter Din-plug on the printer front to the signal input plug on the rewinder.
- **Set and let the ON/OFF switch stay in ON position (1).**



- Prepare the printer so it prints a label. (a paper feed is not enough). When the printer starts to print the rewinder starts automatically. The rewinder is activated 10 sec after a printout.

Hints:

- To get a perfect rewinded roll when printing batches of labels some points are suggested if possible. However the rewinder makes a good job without these proposals.
- In printers Setup use no "negative startadjust", this will avoid retracting the label before printing.
- Check also in the Setup with Normal speed if printer still stops for each label.



Specification:

Bobbin length,	185mm
Label roll size,	38-205mm
Bobbin paper core size,	38-42mm

Dimensions:

L	260mm
W	250mm
H	250mm
Weight	2.9kg

Power:

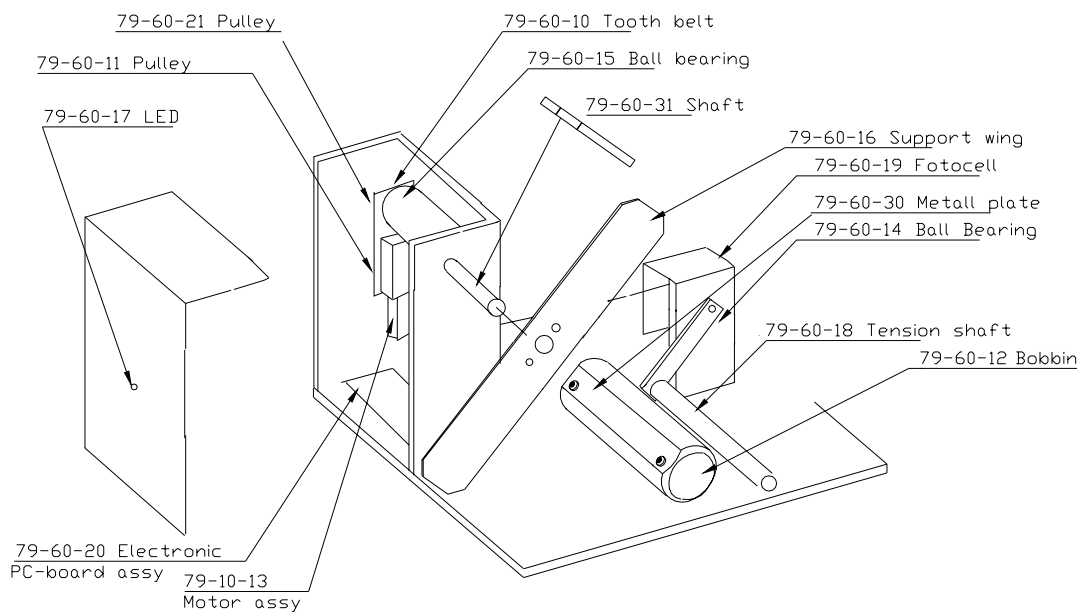
Supply the Rewinder from separate adapter either 18V/AC 15W, 800mA or 24V DC. (2 pole female chassi plug, length 12mm, outer 5,5mm, inner 2.1mm)

Powering from printer is not recommended.

Spares:

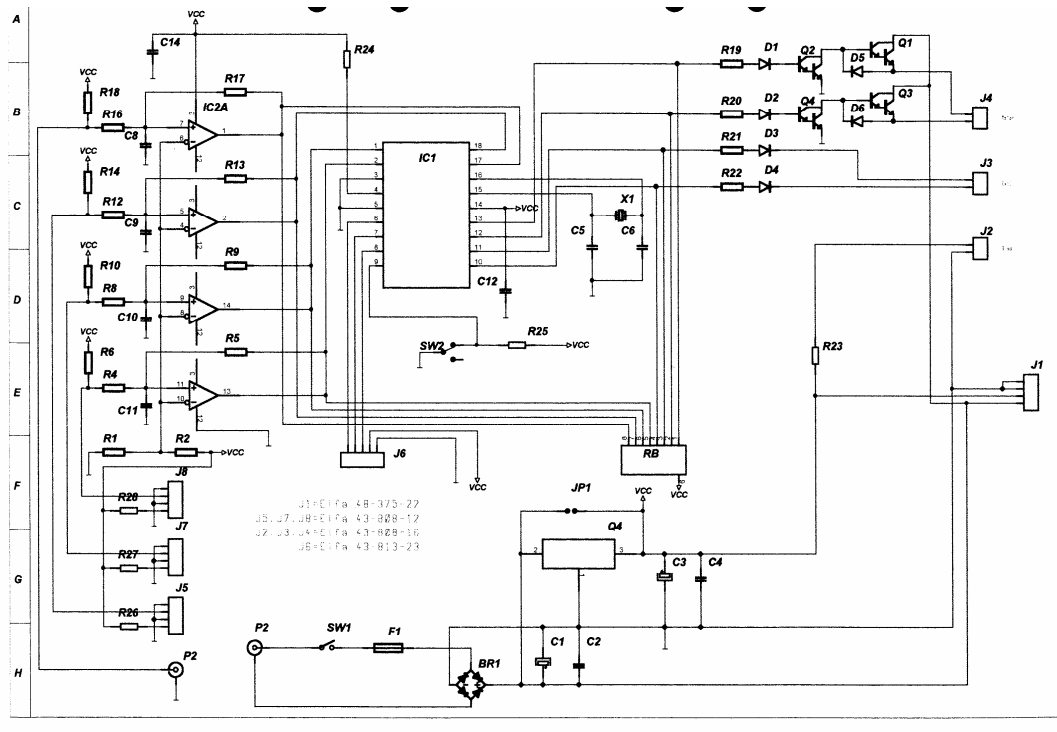
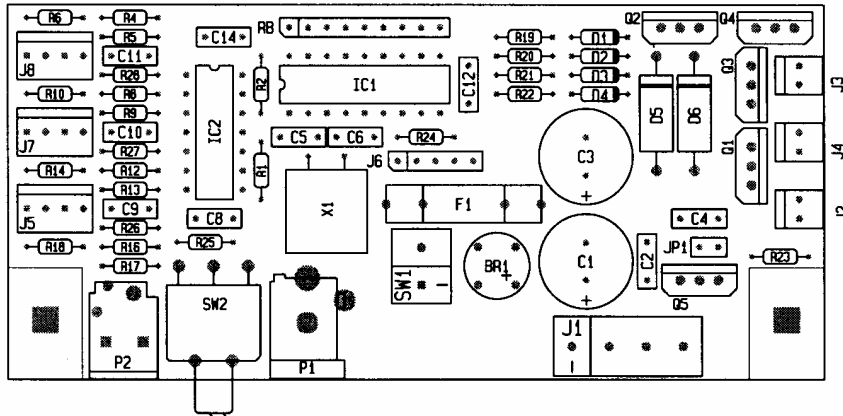
Part No.:	Model:
79-60-11	Pulley
79-10-13	Motor assy
79-60-31	Shaft, motor-bobbin
79-60-10	Tooth belt
79-60-12	Bobbin including support wing
79-60-14	Ball Bearing (tension shaft)
79-60-15	Ball Bearing (bobbin)
79-60-16	Support wing
79-60-17	LED
79-60-18	Tension Shaft
79-60-19	Fotocell
79-60-20	Elektronik pc-board assy
79-60-21	Pulley (bobbin)
79-60-30	Metall plate bobbin
95-50-14	Adapter 230V/18V 20VA
95-50-18	External signal cable (start/stop)
95-50-20	Adapter 76mm (3") bobbin

Options:	Adapter 76mm (3") bobbin	95-50-20
	External signal cable (start/stop)	95-50-18
	Adapter, 230V/18V AC, 15W	95-50-14



Elschema:

Layout



Nasab

Wichrowa 49
 42 200 Czestochowa
 Poland

Phone: +48(0)34 3654405
 Fax: +48(0)34 3654489
 Email: info@nasab.com